

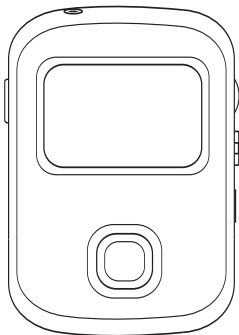


Is it live or is it Memorex?™

MHD8015

User's Guide

*1.5 GB HardDisk Storage
MP3/WMA Player*



**Before operating this product,
please read these instructions completely.**

SAFETY PRECAUTIONS



CAUTION

RISK OF ELECTRIC SHOCK
DO NOT OPEN



CAUTION: TO REDUCE THE RISK OF ELECTRIC SHOCK, DO NOT REMOVE COVER (OR BACK). NO USER-SERVICEABLE PARTS INSIDE. REFER SERVICING TO QUALIFIED SERVICE PERSONNEL.



DANGEROUS VOLTAGE:

The lightning flash with arrowhead symbol, within an equilateral triangle is intended to alert the user to the presence of uninsulated dangerous voltage within the product's enclosure that may be of sufficient magnitude to constitute a risk of electric shock to persons.



ATTENTION:

The exclamation point within an equilateral triangle is intended to alert the user to the presence of important operating and maintenance (servicing) instructions in the literature accompanying the appliance.

WARNING: TO PREVENT FIRE OR SHOCK HAZARD, DO NOT EXPOSE THIS UNIT TO RAIN OR MOISTURE.

PRECAUTIONS

COPYRIGHT:

- Distributing copies of MP3 or WMA with DRM tracks without permission is a violation of international copyright laws.

SAFETY:

- Vibration experienced during walking or exercising will not affect the player. However, dropping the player or dropping a heavy object on the player may result in damage or sound distortion.
- Avoid spilling any liquid onto or into the player.
- Do not leave the player in a location near heat sources; in a location subject to direct sunlight, excessive dust, sand, moisture, rain or mechanical shock; on an unlevel surface; or in a car with the windows closed during periods of excessive heat.

ROAD SAFETY:

- Do not use headphones while driving, cycling or operating any motorized vehicle. It may create a traffic hazard and it is illegal in some areas. It can be potentially dangerous to play your headset at a high volume while walking, especially at pedestrian crossings. You should exercise extreme caution or discontinue use in potentially hazardous situations.

FCC WARNING:

- This equipment may generate or use radio frequency energy. Changes or modifications to this equipment may cause harmful interference unless the modifications are expressly approved in the instruction manual. The user could lose the authority to operate this equipment if an unauthorized change or modification is made.

FCC DECLARATION

This device complies with Part 15 of the FCC rules. Operation is subject to the following two conditions: 1) This device may not cause interference, and 2) This device must accept any interference received, including interference that may cause undesired operation.

Warning: Changes or modifications to this unit not expressly approved by the party responsible for compliance could void the user's authority to operate the equipment.

NOTE: This equipment has been tested and found to comply with the limits for a Class B digital device, pursuant to Part 15 of the FCC Rules. These limits are designed to provide reasonable protection against harmful interference in a residential installation. This equipment generates, uses and can radiate radio frequency energy and, if not installed and used in accordance with the instructions, may cause harmful interference to radio communications.

However, there is no guarantee that interference will not occur in a particular installation. If this equipment does cause harmful interference to radio or television reception, which can be determined by turning the equipment off and on, the user is encouraged to try to correct the interference by one or more of the following measures:

- Reorient or relocate the receiving antenna.
- Increase the separation between the equipment and receiver.
- Connect the equipment into an outlet on a circuit different from that to which the receiver is connected.
- Consult the dealer or an experienced radio/TV technician for help.

Shield cable must be used with this unit to ensure compliance with class B FCC limits.



Dear Customer:

Selecting fine audio equipment such as the unit you've just purchased is only the start of your musical enjoyment. Now it's time to consider how you can maximize the fun and excitement your equipment offers. This manufacturer and the Electronic Industries Association's Consumer Electronics Group want you to get the most out of your equipment by playing it at a safe level. One that lets the sound come through loud and clear without annoying blaring or distortion and, most importantly, without affecting your sensitive hearing.

Sound can be deceiving. Over time your hearing "comfort level" adapts to higher volumes of sound. So what sounds "normal" can actually be loud and harmful to your hearing. Guard against this by setting your equipment at a safe level BEFORE your hearing adapts.

To establish a safe level:

- Start your volume control at a low setting.
- Slowly increase the sound until you can hear it comfortably and clearly, and without distortion.

Once you have established a comfortable sound level:

- Set the dial and leave it there.

Taking a minute to do this now will help to prevent hearing damage or loss in the future. After all, we want you listening for a lifetime.

We Want You Listening For A Lifetime

Used wisely, your new sound equipment will provide a lifetime of fun and enjoyment. Since hearing damage from loud noise is often undetectable until it is too late, this manufacturer and the Electronic Industries Association's Consumer Electronics Group recommend you avoid prolonged exposure to excessive noise. This list of sound levels is included for your protection.

Decibel

Level

Example

30	Quiet library, soft whispers
40	Living room, refrigerator, bedroom away from traffic
50	Light traffic, normal conversation, quiet office
60	Air conditioner at 20 feet, sewing machine
70	Vacuum cleaner, hair dryer, noisy restaurant
80	Average city traffic, garbage disposals, alarm clock at two feet

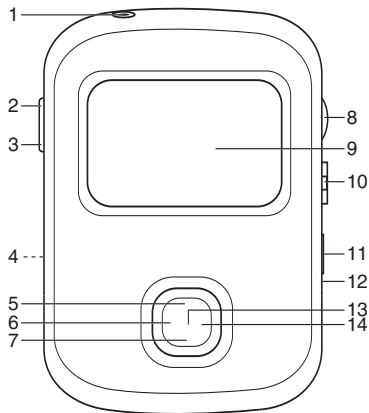
THE FOLLOWING NOISES CAN BE DANGEROUS UNDER CONSTANT EXPOSURE:







90	Subway, motorcycle, truck traffic, lawn mower
100	Garbage truck, chain saw, pneumatic drill
120	Rock band concert in front of speakers, thunderclap
140	Gunshot blast, jet engine
180	Rocket launching pad

Information courtesy of the Deafness Research Foundation.




LOCATION OF CONTROLS



- | | |
|---|---|
| 1. Headphone Jack | 9. Display |
| 2. FWD Button | 10. USB Cover and Port |
| 3. REV Button | 11. HOLD Switch |
| 4. DC IN 5V Jack  | 12. Reset Button |
| 5. Play/Pause  Button | 13.  (Power On/Off)/M (Main Menu) Button |
| 6. Skip/Search  Button | 14. Skip/Search  Button |
| 7. Stop  Button | |
| 8. Volume (+/-)/Scroll (Up/Down) Control | |

POWER SOURCES

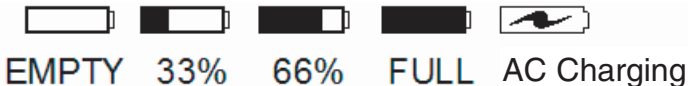
AC OPERATION

To operate the unit using AC power, connect the AC adapter (included) to an AC outlet having 120V, 60Hz AC only. Plug the small end into the DC 5V jack on the side of the unit and connect the other end into the AC outlet. It is recommended to use the AC adapter when possible to save battery life, particularly when transferring files. DC5V 




RECHARGEABLE BATTERY OPERATION

This unit comes with a built-in Lithium Polymer rechargeable battery. It is recommended that the battery be fully charged before using for the first time and when the battery indicator at the top right becomes low.

Below are the icons which will give the rechargeable battery status:



To charge the battery with the unit on:

1. Connect to AC as described above and turn the unit on; the AC/Recharging () indicator (at the top right side of the display) will appear and blink.
2. When the battery is fully charged, the AC/Recharging indicator () will light on and stop blinking. When you unplug the AC adapter, the Full indicator () will appear in the display.

To charge the battery with the unit off:

1. Connect to AC as described above. (To check the battery condition, unplug the AC adapter and turn on the unit to view the battery status icon.)

NOTE: It takes approximately 3 hours to charge the battery from empty to full.

DOWNLOADING AND TRANSFERRING FILES

TO INSTALL THE "DIGITAL AUDIO PLAYER" CD SOFTWARE

For Windows ME, Windows2000 or Windows XP:

Windows will automatically detect the audio player without installing the CD software when the USB cable is connected.

For Macintosh OSX:

Macintosh OSX will automatically detect the audio player without installing the CD software. Do not install the software when using a Macintosh.

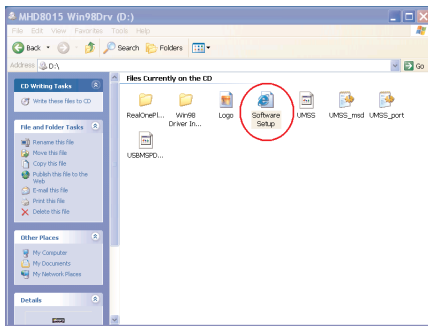
For Windows98SE:

The USB mass storage function will not be activated without driver installation. To activate the USB mass storage function, please use the installation CD-Rom to install the driver.

For Windows 98SE, if you are connecting your player to your computer for the first time, please follow these instructions:

Procedure to Install Player Driver

1. Insert the CD-Rom into the CD Driver; open the CD Drive window to view files using Windows Explorer.
2. Double click the "Software Setup.html" icon.



WINDOWS 98 DRIVER INSTALLATION (CONTINUED)

3. Then click “Windows 98 Driver” in the Installation CD Explorer.



[Windows 98 Driver](#)

[RealOne Player](#)

Brazil	Italian
Danish	Japanese
English	Korean
Spanish	Chinese
French	Taiwanese

4. Then the “Windows 98 Driver Installation Guide” Explorer will appear on the computer screen. Follow the Installation Guide’s procedure to install the Driver to your computer.

FORMATTING THE PLAYER

Formatting the Player

1. Use the USB cable to connect the player and the computer.
2. The unit will restart or turn on automatically, "Welcome" will appear briefly and then the USB icon will appear in the display. (The player is now connected to the computer.)
3. Double click on My computer, right click the "Removable Disk" and left click on "Format".
4. At the "Format" window, select "FAT32" from the file system pull down menu, then click start to format the unit (see figure to the right).

NOTE: Make sure you have selected the "FAT32" at the file system pull down menu, otherwise after formatting, the player will not work properly.

5. Click OK to confirm and the player will start to format.
6. When finished, click "Close" to close the Format window.



USB Icon



DOWNLOADING AND TRANSFERRING FILES

TRANSFERRING FILES

You can download digital music files from the internet or use encoding software to convert music that you have on an audio CD into MP3 or WMA format. Once these files are stored on your computer you can easily copy them to your player.

Connect the computer to your player using the supplied USB cable. The unit will restart or turn on automatically, "Welcome" will appear briefly and then the USB icon will appear in the display. (The player is now connected to the computer.)

Double click My Computer, the double click on the "Removable Disk" to open the "Removable Disk" window.

To add more files and songs to your player simply drag and drop MP3 or WMA files from anywhere on your computer into the "Removable Disk" window. When music is stored in either of these formats, it can contain additional information about the tracks in an ID3Tag. The ID3Tag contains the Artist name, Album name, song Title and/or Genre (style of music). When a file is copied to this unit, this unit retrieves the ID3 Tag information from the file. The unit uses this information to index the file into the Artist, Album, Track, Genre categories displayed on the unit. If the ID3 Tag is empty, the unit will use the file's file name and current directory as the Track name and Artists name accordingly.

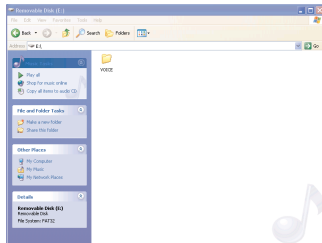
IMPORTANT NOTE: The WMA file with DRM will not playback if you directly drag and drop it into the "Removable Disk" window. See pages 15-16 for downloading WMA files with DRM from the computer to your player.

When you are finished, see the Safely Remove Hardware procedure on the next page before disconnecting the player.

After disconnecting the player from the computer, the player will restart again, "Welcome" followed by "Memorex" will appear briefly and then the player will check and update the index automatically if there are new tracks/files which were added to the player. It will take from several seconds to several minutes to check/update the index (depending on the total files/tracks added). When it is finished, the Main Menu will show at the display automatically.



USB Icon



DOWNLOADING AND TRANSFERRING FILES (CONTINUED)

SAFELY REMOVING YOUR PLAYER FROM THE COMPUTER

NOTE: To avoid damage to your player or data loss, always follow the procedure listed below before disconnecting the USB cable from your computer or disconnecting the player from the USB cable.

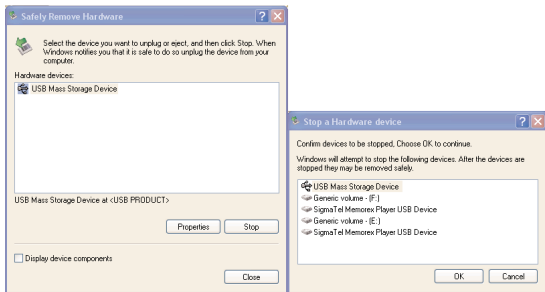
Using your mouse, double click the "Safely Remove Hardware" icon on the task bar.

From the "Safely Remove Hardware" window, select "USB Mass Storage Device" and click the "Stop" button. The "Stop a Hardware Device" window will pop up as shown:

Click "OK". When the "Safe to Remove Hardware" window is displayed, you may remove the player from the USB cable or remove the USB cable from the computer. The unit will then restart, update and check the index automatically.



NOTE: If the "Safely Remove Hardware" icon is not displayed on the task bar, please double click on My Computer. Right click on "Removable Disk" and left click on "eject". Then it is safe to remove the player from the computer.



After disconnecting the player from the computer, the player will restart again, "Welcome" followed by "Memorex" will appear briefly and then the player will check and update the index automatically if there are new tracks/files which were added to the player. It will take from several seconds to several minutes to check/update the index (depending on the total files/tracks added). When it is finished, the Main Menu will show at the display automatically.

DOWNLOADING AND TRANSFERRING FILES (CONTINUED)

REALONE PLAYER INSTALLATION

(PC ONLY):

1. Insert the Installation CD-ROM into the CD Drive and double click Software_Setup.html, the screen to the right will appear.



[Windows 98 Driver](#)

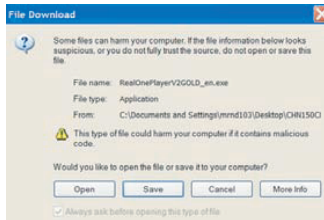
[RealOne Player](#)

[Brazil](#) [Italian](#)
[Danish](#) [Japanese](#)
[English](#) [Korean](#)
[Spanish](#) [Chinese](#)
[French](#) [Taiwanese](#)

2. Click on the desired language to start downloading RealOne Player.
3. Click OPEN; the installation will automatically start.
4. Follow the RealOne Install Wizard online prompts to complete the installation.

NOTES:

- Before saving tracks to your RealOne player, open the RealOne player and click on "CD" at the bottom of the screen. Next, click on Preferences; select MP3 audio as the format, then click "OK". This will ensure the music is recorded in the correct format for the player to read.



DOWNLOADING AND TRANSFERRING FILES (CONTINUED)

INSTRUCTIONS FOR DOWNLOADING SONGS FROM THE COMPUTER USING REALONE SOFTWARE

- 1 Install the RealOne Software, version 2.0.
- 2 When the unit is on, connect the USB cable to the Digital Audio Player and the USB port of the computer. Once the USB cable is connected to the player, the unit will restart or turn on automatically, "Welcome" will appear briefly and then the USB icon will appear in the display. (The player is now connected to the computer.)
- 3 To make sure the computer recognizes the Digital Audio player, double click on MY COMPUTER, and check for a drive called Removable Disk. Double click on Removable Disk and minimize this window.
- 4 Insert a Music CD into the CD-Rom drive of your computer, and open RealOne Media Browser. Next, click on the CD icon on the bottom tool bar of the Media Browser. Click on preferences, choose MP3 Audio, and 96Kbps Stereo and click OK.
- 5 Click the "Save Tracks" icon on the bottom menu bar to open the "Select Tracks" dialog box. Select the desired tracks on the CD and click "OK" to save the tracks into My Library; "Pending" will appear at the end of the tracks' name and "Saved" will be shown after the track's name when finished saving. Choose "My Library" from the Menu Bar and double click on the yellow folder (show organizer). Double click on the "All Media" (view your entire library) to view a list of the saved songs.
- 6 Click on the yellow plus (+) sign on the left bottom tool bar and click on "Add File" to add the tracks to the Digital Audio player. Once you click on Add File, another dialog box will appear on your screen. Double click on the name of the CD that you want to load into your Digital Audio player and highlight all of the songs. Right click on the songs and select "Send To", then click on the Digital Audio player. If you do not see your Digital Audio player, click on Copy to copy the songs.
- 7 Open the Removable Disk window, right click to open another dialog box and click on paste to load your songs into your Digital Audio player. Once you paste the songs, the files will start transferring.
- 8 Once the files are finished loading into the player, follow the "Safely Remove Hardware" procedure described on page 12. After disconnecting the player from the computer, the player will restart again, "Welcome" followed by "Memorex" will appear briefly and then the player will check and update the index automatically if there are new tracks/files which were added to the player. It will take from several seconds to several minutes to check/update the index (depending on the total files/tracks added). When it is finished, the Main Menu will show at the display automatically.

IMPORTANT NOTE: WMA DRM files will not play on the player if you use this method for transferring files.

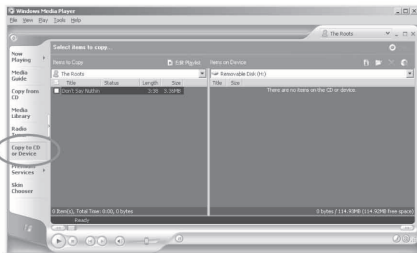
DOWNLOADING AND TRANSFERRING FILES (CONTINUED)

Instructions for downloading WMA files with DRM from the computer to the player using Windows Media Player 9.

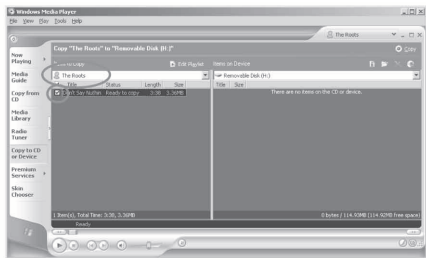
In order to download WMA files with DRM you must follow the procedure described below. If you do not have “Windows Media Player 9” on your computer, you must go to www.Microsoft.com to download and install this software. Before beginning the procedure please turn the unit ON and connect the USB cable to the unit and to the USB port of your computer.

The unit will restart automatically, “Welcome” will appear briefly and then the USB icon will appear in the display. (The player is now connected to the computer.)

1. Open the 'Windows Media Player Browser' and click on 'Copy to CD or Device'.



2. Click on the “Items to Copy” pull down menu to locate the music files you wish to download. Make sure to tick the box next to the files.



DOWNLOADING AND TRANSFERRING FILES (CONTINUED)

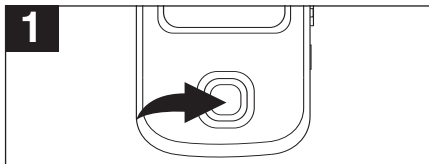
3. Select the Portable Device you want to copy to from the “Items on Device” drop down menu. Click “Copy” to start transferring the DRM files onto your unit.



4. After you have downloaded all the desired files to your unit, follow the “Safely Remove Hardware” procedure described in the manual. See page 12.

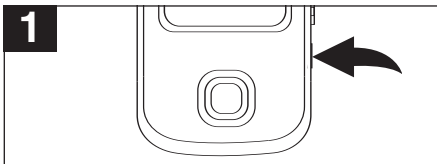
OPERATION

TURNING THE POWER ON/OFF



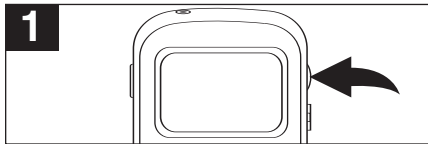
To turn the unit on, press the (Power On/Off)/M (Main Menu) button; “Welcome” followed by “Memorex” will appear briefly and then the Main Menu will appear on the screen. To turn the unit off, press and hold the (Power On/Off)/M (Main Menu) button until “Continue holding to switch off” disappears from the screen.

HOLD SWITCH

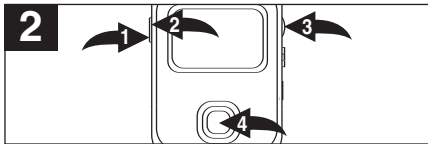


Slide the HOLD switch to the Lock (down) position; the Lock indicator will appear in the display and there will be no function for the buttons when you press the buttons. This is useful when you do not want the track changed by accidentally pressing a button. Slide the HOLD switch to the Unlock (up) position to cancel the Hold function.

NAVIGATING THROUGH SCREENS



Scroll through the menus using the Volume (+/-)/Scroll (Up/Down) control. Select the file/option by pressing the Volume (+/-)/Scroll (Up/Down) control.

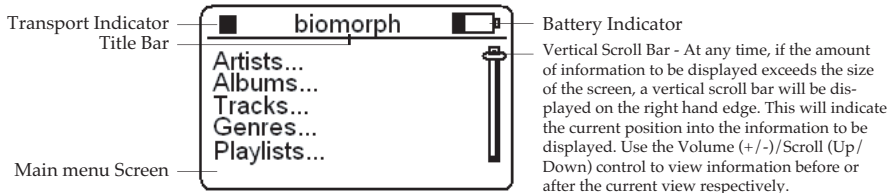


To return to the previous menu, press the REV button ❶. To advance to the next menu, press the FWD button ❷ or press the Volume (+/-)/Scroll (Up/Down) control ❸. To return to the MAIN menu, press the (Power On/Off)/M (Main Menu) button ❹.

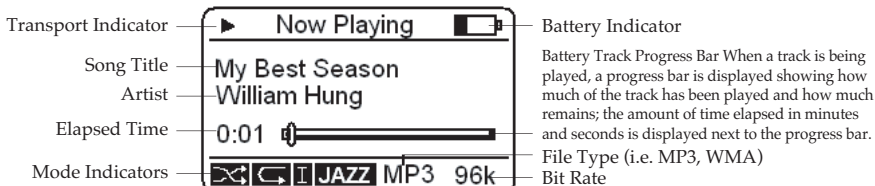
OPERATION (CONTINUED)

SCREEN DISPLAYS AND DESCRIPTIONS

MAIN MENU

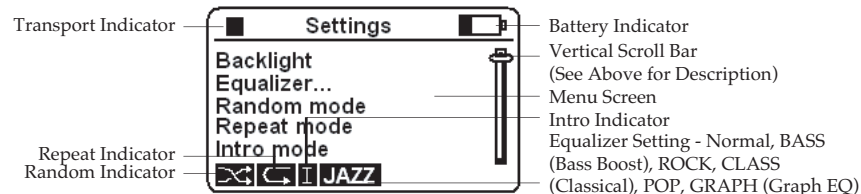


NOW PLAYING MENU



Volume Level: The volume level can only be set in the Now Playing Menu.

SETTING MENU



OPERATION (CONTINUED)

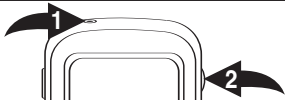
TO LISTEN TO MP3s/WMA's

1



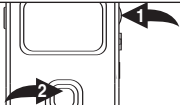
To turn the unit on, press the (Power On/Off)/M (Main Menu) button; "Welcome" followed by "Memorex" will appear briefly and then the Main Menu will appear on the screen.

2



Plug the headphones into the Headphone jack **1** and place them on your ears. Select the desired music storage (ARTIST, ALBUMS, TRACKS, GENRES OR PLAYLIST) using the Volume (+/-)/Scroll (Up/Down) control **2**, then press the Volume (+/-)/Scroll (Up/Down) control **2** to select. NOTE: For playlist, you must create a playlist first, see page 28.

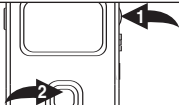
3a



TO PLAY A SELECTED FOLDER:

The selected screen will appear. Select a folder using the Volume (+/-)/Scroll (Up/Down) control **1**, then press the Play/Pause **2** button **2** to start playback of the first track inside the folder and the now playing menu will appear on the screen. When selecting an ARTIST, select the desired artist by using the Volume (+/-)/Scroll (Up/Down) control **1**, then select the desired album by using the Volume (+/-)/Scroll (Up/Down) control **1** followed by pressing the Play/Pause **2** button **2**.

3b

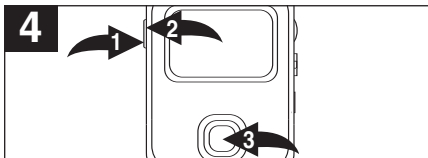


TO SELECT AND PLAY A TRACK:

The selected screen will appear. Select a folder (track if TRACKS was selected in step 2) using the Volume (+/-)/Scroll (Up/Down) control **1**, then press the Volume (+/-)/Scroll (Up/Down) control **1**. Select a track using the Volume (+/-)/Scroll (Up/Down) control **1**, then press the Volume (+/-)/Scroll (Up/Down) control **1** or press the Play/Pause **2** button **2** to start playback of the selected track. The "Now Playing Track Menu" will appear on the screen.

CONTINUED ON THE NEXT PAGE

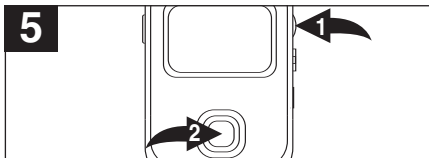
OPERATION (CONTINUED)



To return to the previous menu, press the REV button ❶.

To advance to the next menu, press the FWD button ❷.

To return to the MAIN menu, press the (Power On/Off)/M (Main Menu) button ❸.

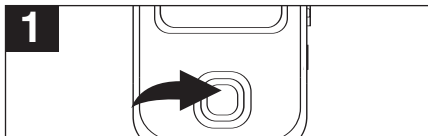


Adjust the volume level using the Volume (+/-)/Scroll (Up/Down) control ❶; the volume indicator will briefly be displayed on the screen. To turn the unit off, press and hold the (Power On/Off)/M (Main Menu) button ❷ until the unit completely turns off.

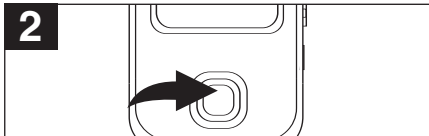
NOTES:

- The volume can only be adjusted at the “Now Playing Track Menu”. Press the REV button repeatedly to return to that menu.
- See pages 8 through 16 for information on uploading MP3 and WMA files to this unit.

TO PAUSE PLAYBACK



During playback, if you wish to pause the file momentarily, press the Play/Pause ►|| button; playback will pause and the timer will stop counting.

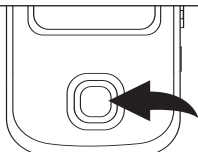


Press the Play/Pause ►|| button again to resume playback; the sound will return and the timer will start counting again.

OPERATION (CONTINUED)

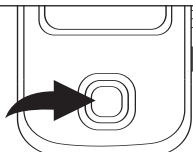
FORWARD/REVERSE SKIP

1



During playback, press the Skip/Search ►► button to advance the player to the beginning of the next file in the folder. Press the Skip/Search ►► button repeatedly to advance the player to higher-numbered files in the folder.

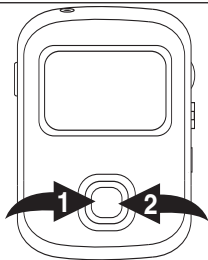
2



During playback, press the Skip/Search ◀◀ button to move the player back to the beginning of the currently playing file. Press the Skip/Search ◀◀ button repeatedly to move the player back to lower-numbered files in the folder.

HIGH-SPEED MUSIC SEARCH

1

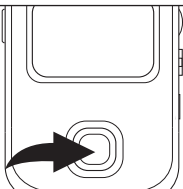


During playback, press and hold the Skip/Search ◀◀ ❶ or ►► ❷ button to move the player forward or backward within a file to locate a specific musical passage. The player will move forward or backward at high speed as long as the Skip/Search ◀◀ ❶ or ►► ❷ button is held. When you release the button, normal playback will resume.

OPERATION (CONTINUED)

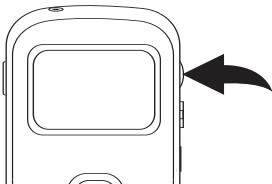
RANDOM PLAYBACK

1



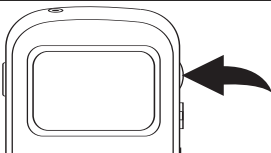
To turn the unit on, press the (Power On/Off)/M (Main Menu) button; "Welcome" followed by "Memorex" will appear briefly and then the Main Menu will appear on the screen.

2



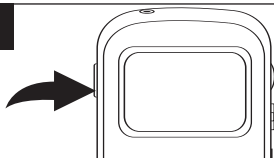
Select **SETTINGS** using the Volume/Navigation control, then press the Volume/Navigation control to select it; the Settings menu will appear.

3



Select **RANDOM MODE** using the Volume/Navigation control, then press the Volume/Navigation control to select it; the Random indicator (⌘) will appear.

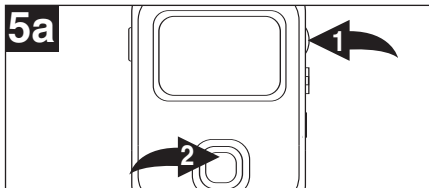
4



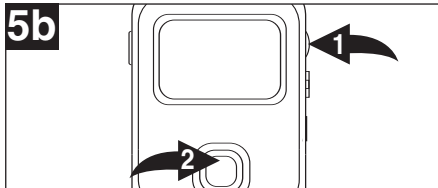
Press the **REV** button to return to the main menu.
To randomly play all tracks on the unit, go to step 5a.
To randomly play a particular Artist, Album or Genre, go to step 5b.

CONTINUED ON THE NEXT PAGE

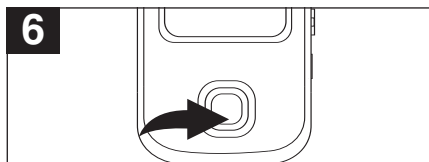
OPERATION (CONTINUED)



Select **TRACKS** using the Volume (+/-)/Scroll (Up/Down) control ❶, then pressing the Volume (+/-)/Scroll (Up/Down) control ❶ followed by the Play/Pause ►|| button ❷ to start Random playback of all the tracks installed.



Select a folder (**ARTIST, ALBUMS, GENRES** or **PLAYLIST**) using the Volume (+/-)/Scroll (Up/Down) control ❶, then press the Volume (+/-)/Scroll (Up/Down) control ❶ to select it. Select a desired Artist, Albums, Genres or Playlist using the Volume (+/-)/Scroll (Up/Down) control ❶, then press the Play/Pause ►|| button ❷ to start random playback.



The unit will randomly playback all the tracks inside the folder or album and then stop. Press the Stop ■ button to stop Random playback before it is finished.

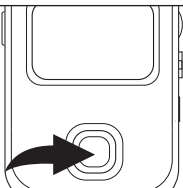
NOTES:

- If you select **ARTIST** in step 5b, you can then select a particular album of the selected artist for Random playback.
- To cancel Random Mode, repeat steps 2 and 3. Make sure the Random indicator disappears from the screen.
- You can select multiple modes (i.e. Repeat and Random) as desired.
- To randomly playback the tracks inside the playlist, you must first create a playlist (see page 28).

OPERATION (CONTINUED)

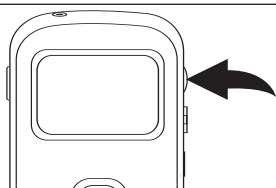
REPEAT PLAYBACK

1



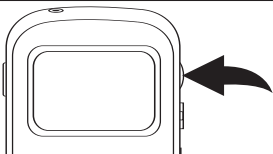
To turn the unit on, press the (Power On/Off)/M (Main Menu) button; “Welcome” followed by “Memorex” will appear briefly and then the Main Menu will appear on the screen.

2



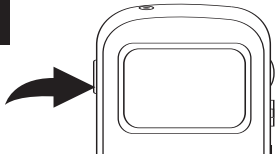
Select SETTINGS using the Volume (+-)/Scroll (Up/Down) control, then press the Volume (+-)/Scroll (Up/Down) control to select it; the Settings menu will appear.

3



Select REPEAT MODE using the Volume (+-)/Scroll (Up/Down) control, then press the Volume (+-)/Scroll (Up/Down) control to select it; the Repeat indicator (↶) will appear.

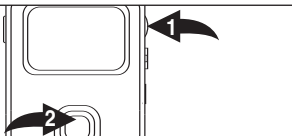
4



Press the REV button ❶ or the (Power On/Off)/M (Main Menu) button ❷ to return to the main menu.
To repeat all tracks on the unit, go to step 5a.
To repeat a particular Artist, Album, Genre or Playlist, go to step 5b.

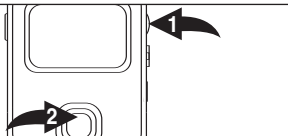
OPERATION (CONTINUED)

5a



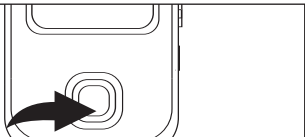
Select the **TRACKS** folder using the Volume (+/-)/Scroll (Up/Down) control ❶, then press the Volume (+/-)/Scroll (Up/Down) control ❶ to select it followed by the Play/Pause ►|| button ❷ to start Repeat playback of all tracks.

5b



Select a folder (**ARTIST**, **ALBUMS**, **GENRES** or **PLAYLIST**) using the Volume (+/-)/Scroll (Up/Down) control ❶, then press the Volume (+/-)/Scroll (Up/Down) control ❶ to select it. Select a desired Artist, Album or Genre using the Volume (+/-)/Scroll (Up/Down) control ❶, then press the Play/ Pause ►|| button ❷ to start Repeat playback.

6



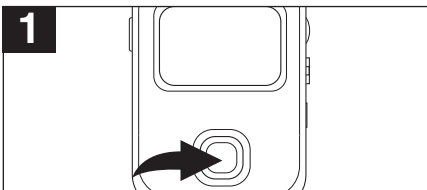
Repeat playback will continue until the Stop ■ button has been pressed.

NOTES:

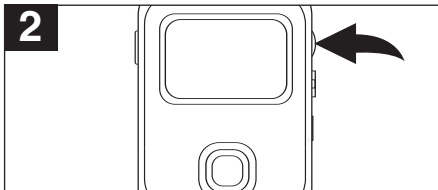
- If you select **ARTIST** in step 5b, you can then select a particular album of the selected artist for Repeat playback.
- To cancel Repeat mode, repeat steps 2 and 3. Make sure the Repeat indicator disappears from the screen.
- You can select multiple modes (i.e. Repeat and Random) as desired.
- To Repeat playback the tracks inside the playlist, you must create a playlist first (see page 28).

OPERATION (CONTINUED)

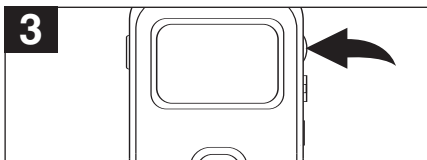
INTRO PLAYBACK



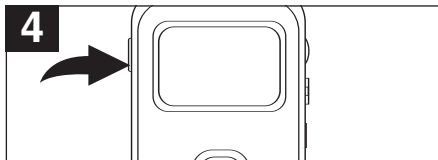
To turn the unit on, press the (Power On/Off)/M (Main Menu) button; "Welcome" followed by "Memorex" will appear briefly and then the Main Menu will appear on the screen.



Select **SETTINGS** using the Volume/Navigation control, then press the Volume/Navigation control to select it; the Settings menu will appear.



Select **INTRO MODE** using the Volume/Navigation control, then press the Volume/Navigation control to select it; the Intro indicator (I) will appear.



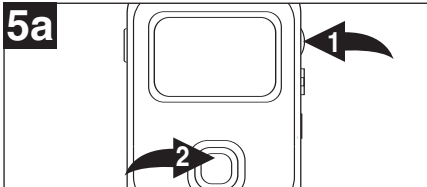
Press the **REV** button to return to the main menu.

To play the first 10 seconds of every track on the unit, go to step 5a.

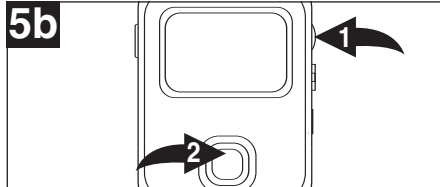
To play the first 10 seconds of the particular Artist, Album, Genre or Playlist, go to step 5b.

CONTINUED ON THE NEXT PAGE

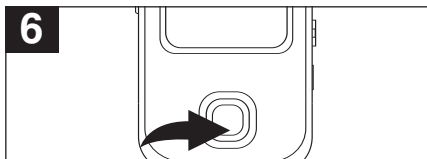
OPERATION (CONTINUED)



Select the TRACKS folder, using the Volume (+-/Scroll (Up/Down) control ❶, then press the Volume (+-/Scroll (Up/Down) control ❶ followed by the Play/Pause ►|| button ❷ to start Into playback of all tracks.



Select a folder (ARTIST, ALBUMS, GENRES or PLAYLIST) using the Volume (+-/Scroll (Up/Down) control ❶, then press the Volume (+-/Scroll (Up/Down) control ❶ to select it. Select a desired Artist, Albums, Genres or Playlist using the Volume (+-/Scroll (Up/Down) control ❶, then press the Play/ Pause ►|| button ❷ to start Intro playback.



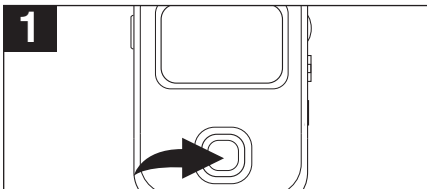
Intro playback will continue until all tracks have been played or the Stop ■ button has been pressed.

NOTES:

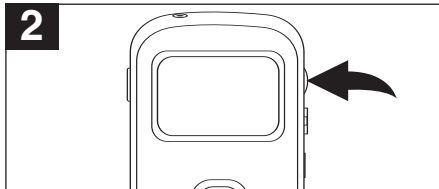
- If you select ARTIST in step 5b, you can then select a particular album of the selected artist for Intro playback.
- To cancel Intro mode, repeat steps 2 and 3. Make sure the Repeat icon disappears from the screen.
- You can select multiple modes (i.e. Repeat and Random) as desired.
- To Intro playback the tracks inside the playlist, you must create a playlist first (see page 28).

OPERATION (CONTINUED)

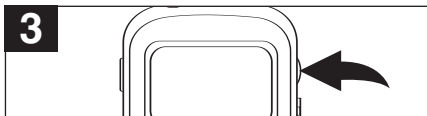
CREATING A PLAYLIST



To turn the unit on, press the (Power On/Off)/M (Main Menu) button; “Welcome” followed by “Memorex” will appear briefly and then the Main Menu will appear on the screen.



Select PLAYLIST MANAGER using the Volume (+-/)/Scroll (Up/Down) control, then press the Volume (+-/)/Scroll (Up/Down) control to select it; the Playlist Manager menu will appear.



Select CREATE A NEW PLAYLIST using the Volume (+-/)/Scroll (Up/Down) control, then press the Volume (+-/)/Scroll (Up/Down) control to select it; the Create Playlist menu will appear.

NOTE: Each time you create a new playlist, the player will arrange a new number of playlist, i.e. the first playlist is “PLY000”, the second “PLY001”, etc.



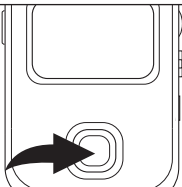
Navigate through the folders and select the first song for the playlist as described on page 17. When the song is highlighted, press the Volume (+-/)/Scroll (Up/Down) control ① to add it. After the track is added, the highlighter will skip back to the first track of the folder/album. Repeat this step until all desired tracks are added. Press the (Power On/Off)/M (Main Menu) button ② to return to the Main Menu and exit the playlist setting.

NOTE: A track can be added as many times as desired.

OPERATION (CONTINUED)

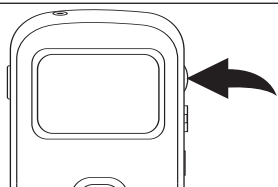
PLAYING A PLAYLIST

1



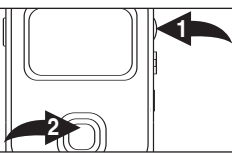
To turn the unit on, press the (Power On/Off)/M (Main Menu) button; “Welcome” followed by “Memorex” will appear briefly and then the Menu will appear on the screen.

2



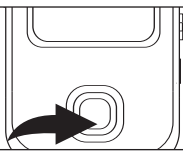
Select **PLAYLISTS** using the Volume (+-)/Scroll (Up/Down) control, then press the Volume (+-)/Scroll (Up/Down) control to select it; the Playlist menu will appear.

3



Select a desired playlist using the Volume (+-)/Scroll (Up/Down) control ❶, then press the Play/Pause ►|| button ❷ to start playback. **OR** Press the Volume (+-)/Scroll (Up/Down) control ❶. Then you can use the Volume (+-)/Scroll (Up/Down) control ❶ to select the desired tracks inside the playlist. Press the Volume (+-)/Scroll (Up/Down) control ❶ to start playback of the desired tracks in the playlist.

4



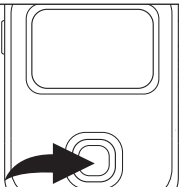
The “Now Playing Track Menu” will appear on the screen. Playback will continue until all tracks in the playlist have been played or the Stop ■ button has been pressed.

NOTE: Before the unit starts to playback the tracks in the playlist, it may require several seconds to load the files.

OPERATION (CONTINUED)

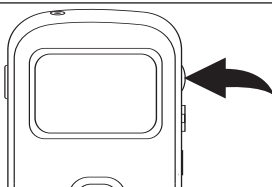
MODIFYING A PLAYLIST (Adding or Deleting a Track)

1



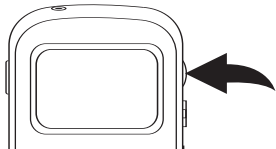
To turn the unit on, press the (Power On/Off)/M (Main Menu) button; "Welcome" followed by "Memorex" will appear briefly and then the Main Menu will appear on the screen.

2



Select **PLAYLIST MANAGER** using the Volume (+/-)/Scroll (Up/Down) control, then press the Volume (+/-)/Scroll (Up/Down) control to select it; the Playlist Manager menu will appear.

3



Select **MODIFY EXISTING PLAYLIST** using the Volume (+/-)/Scroll (Up/Down) control, then press the Volume (+/-)/Scroll (Up/Down) control to select it.

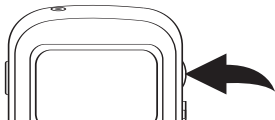
To add tracks, see steps 4a and 5a.

To delete tracks, see steps 4b and 5b.

CONTINUED ON THE NEXT PAGE

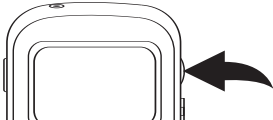
OPERATION (CONTINUED)

4a



TO ADD: Select ADD TRACKS using the Volume (+-)/Scroll (Up/Down) control, then press the Volume (+-)/Scroll (Up/Down) control to select it. Select the desired playlist using the Volume (+-)/Scroll (Up/Down) control, then press the Volume (+-)/Scroll (Up/Down) control to select it.

5a

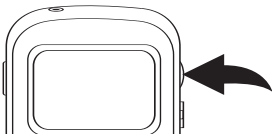


Navigate through the folders and select a song to add to the playlist as described on page 17. When the song is highlighted, press the Volume (+-)/Scroll (Up/Down) control to add it. Repeat this step until all desired tracks are added.

NOTES:

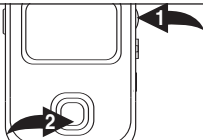
- Press the (Power On/Off)/M (Main Menu) button to return to the Main Menu when finished adding tracks in the playlist.
- A track can be added as many times as desired.

4b



TO DELETE: Select DELETE TRACKS using the Volume (+-)/Scroll (Up/Down) control, then press the Volume (+-)/Scroll (Up/Down) control to select it. Select the desired playlist using the Volume (+-)/Scroll (Up/Down) control, then press the Volume (+-)/Scroll (Up/Down) control to select it.

5b

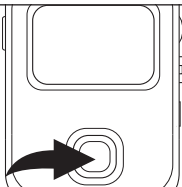


Select a track to delete using the Volume (+-)/Scroll (Up/Down) control ❶, then press the Volume (+-)/Scroll (Up/Down) control ❶; “#####” will replace the track name. Press and hold the Stop ■ button ❷ for two seconds to confirm and the file will be deleted. Then it will return to highlight the first track of the playlist. Repeat this step to delete additional tracks. **NOTE:**When you are finished deleting tracks, press the (Power On/Off)/M (Main Menu) button to return to the Main Menu.

OPERATION (CONTINUED)

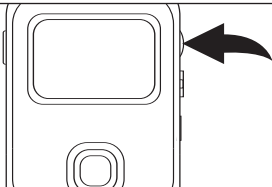
DELETING A PLAYLIST

1



To turn the unit on, press the (Power On/Off)/M (Main Menu) button; "Welcome" followed by "Memorex" will appear briefly and then the Main Menu will appear on the screen.

2



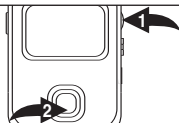
Select PLAYLIST MANAGER using the Volume (+-/Scroll) (Up/Down) control, then press the Volume (+-/Scroll) (Up/Down) control to select it; the Playlist Manager menu will appear.

3



Select DELETE EXISTING PLAYLIST using the Volume (+-/Scroll) (Up/Down) control, then press the Volume (+-/Scroll) (Up/Down) control to select it; the Playlist menu will appear.

4

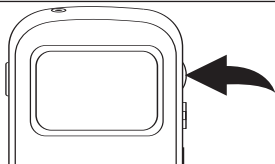


Select a Playlist to delete using the Volume (+-/Scroll) (Up/Down) control ❶, then press the Volume (+-/Scroll) (Up/Down) control ❶; "#####" will replace the playlist name. Press and hold the Stop ■ button ❷ for two seconds to confirm and the playlist will be deleted. Repeat this step to delete additional playlists. **NOTE:**When you are finished deleting playlists, press the (Power On/Off)/M (Main Menu) button to return to the Main Menu.

OPERATION (CONTINUED)

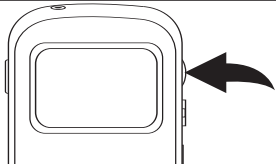
ADJUSTING THE BACKLIGHT SETTING

1



While in the Main Menu, select **SETTINGS** using the Volume (+-)/Scroll (Up/Down) control, then press the Volume (+-)/Scroll (Up/Down) control to select it; the Settings menu will appear.

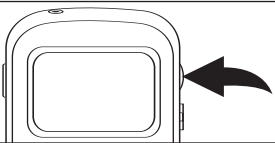
2



Select **BACKLIGHT** using the Volume/ Navigation control, then press the Volume/ Navigation control to turn it on or off. Turning it on will turn on the backlight for 20 seconds whenever a button is pressed, which will help you view the screen in dark areas.

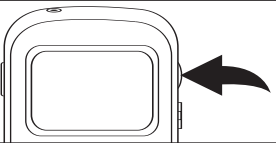
ADJUSTING THE CONTRAST

1



While in the Main Menu, select **SETTINGS** using the Volume (+-)/Scroll (Up/Down) control, then press the Volume (+-)/Scroll (Up/Down) control to select it; the Settings menu will appear.

2



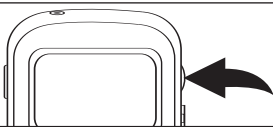
Select **CONTRAST** using the Volume/ Navigation control, then press the Volume/ Navigation control to select it. Set the desired contrast using the Volume (+-)/Scroll (Up/Down) control.

NOTE: To return to the Main Menu, press the (Power On/Off)/M (Main Menu) button.

OPERATION (CONTINUED)

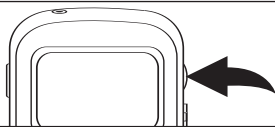
ADJUSTING THE EQUALIZER SETTING

1



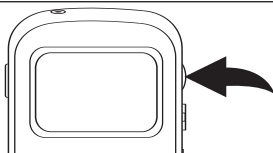
While in the Main Menu, select SETTINGS using the Volume (+-)/Scroll (Up/Down) control, then press the Volume (+-)/Scroll (Up/Down) control to select it; the Settings menu will appear.

2



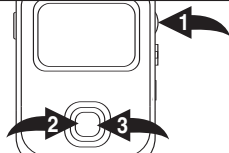
Select EQUALIZER using the Volume/Navigation control, then press the Volume/Navigation control to select it.

3



PRESET EQ: Select the desired preset EQ (Normal, Bass Boost, Rock, Jazz, Classical or Pop) using the Volume (+-)/Scroll (Up/Down) control, then press the Volume (+-)/Scroll (Up/Down) control to select it and return to the SETTINGS menu.

4



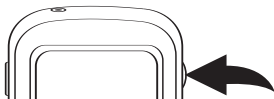
GRAPHIC EQ: To make your own EQ settings, select the GRAPHIC EQ using the Volume (+-)/Scroll (Up/Down) control ❶, then press the Volume (+-)/Scroll (Up/Down) control ❶ to select it. Select the control to adjust using the Skip/Search ◀❷ or ▶❸ button, then adjust using the Volume (+-)/Scroll (Up/Down) control ❶. Press the Volume (+-)/Scroll (Up/Down) control ❶ when finished and return to the SETTINGS menu.

NOTE: To return to the Main Menu, press the (Power On/Off)/M (Main Menu) button.

OPERATION (CONTINUED)

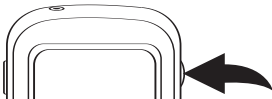
SETTING THE POWER SAVING OPTION

1



This option is useful to set lower to save battery life. While in the Main Menu, select **SETTINGS** using the Volume (+-)/Scroll (Up/Down) control, then press the Volume (+-)/Scroll (Up/Down) control to select it; the Settings menu will appear.

2

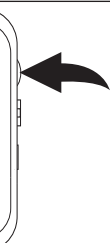


Select **POWER SAVING** using the Volume/Navigation control, then press the Volume/Navigation control to select it. Set the desired power saving time using the Volume/Navigation control, then press the Volume/Navigation control.

NOTE: The power saving time's function is to turn off the unit automatically while in the Stop mode (and when no buttons are pressed). You can select the following power saving times: **Disable** (will not turn off automatically), **1 min**, **2 mins**, **5 mins** or **10 mins** (will turn off automatically after 1 minute, 2 minutes, 5 minutes or 10 minutes).

REFRESH INDEX

1



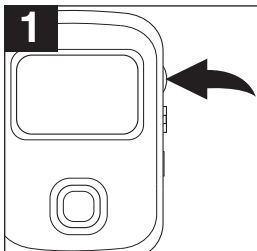
The player automatically looks for new files when it starts up. Should you suspect that the player has not recognized a file which you have added then the "Refresh Index" option will initiate a complete re-indexing of all the material on the hard drive. While in the Main Menu, select **SETTINGS** using the Volume (+-)/Scroll (Up/Down) control, then press the Volume (+-)/Scroll (Up/Down) control to select it; the Settings menu will appear. Select **REFRESH INDEX**, then press the Volume (+-)/Scroll (Up/Down) control to start the refreshing of the index.

NOTE: Once the re-indexing process has started, no button will function until the process is completed. The time for the process will vary depending on the amount of files installed. Once completed, the unit will return to the Main Menu automatically.

NOTE: To return to the Main Menu, press the (Power On/Off)/M (Main Menu) button.

OPERATION (CONTINUED)

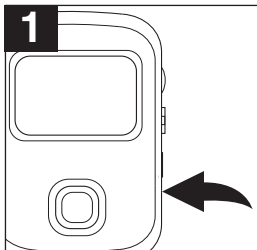
ABOUT



The “About” menu displays information describing the revision of the firmware loaded in the unit and the maximum capacity of the hard drive.

While in the Main Menu, select SETTINGS using the Volume (+/-)/Scroll (Up/Down) control, then press the Volume (+/-)/Scroll (Up/Down) control to select it; the Settings menu will appear. Select ABOUT, then press the Volume (+/-)/Scroll (Up/Down) control to view the information of this unit.

RESET






If the player is not working properly or the buttons do not function when pressed (and the Hold button is in the Unlock position), you can reset the unit. To reset the unit, use a sharp object (such as a paper clip or ballpoint pen), insert in the hole and press the Reset button.

NOTE: To return to the Main Menu, press the (Power On/Off)/M (Main Menu) button.

TROUBLESHOOTING GUIDE

If you experience a problem with this unit, check the chart below before calling for service.

<i>PROBLEM</i>	<i>POSSIBLE CAUSE</i>	<i>SOLUTION</i>
<i>PLAYER will not turn on.</i>	<i>Battery weak or dead.</i>	<i>Recharge the built-in battery (see page 7).</i> <i>Power the unit using the supplied AC adapter or see page 39 for customer service.</i>
<i>PLAYER will not respond to any buttons pressed.</i>	<i>HOLD switch is set to Hold.</i>	<i>Slide up to release hold.</i>
<i>There is no sound from the headphones.</i>	<i>Headphone plug not inserted correctly.</i> <i>Volume is set to minimum.</i>	<i>Check that the headphone plug is properly inserted.</i> <i>Check that the volume level is not at its lowest setting.</i>
<i>Files are not appearing in the playlist when I try to download to the unit.</i>	<i>Files in the playlist are in unsupported formats.</i>	<i>Use the record function in MusicMatch to encode the files into MP3 or WMA formats and then save them to the playlist.</i>
<i>Display shows</i> 	<i>RAM Test Failure.</i>	<i>Press the Reset button or see page 39 for customer service.</i>
<i>Display shows</i> 	<i>HDD Test Failure.</i>	<i>Press the Reset button or see page 39 for customer service.</i>
<i>Display shows</i> 	<i>Boot Failure.</i>	<i>Press the Reset button or see page 39 for customer service.</i>
<i>No sound, or WMA files with DRM can't playback.</i>	<i>Files copied & pasted, or incorrectly downloaded.</i>	<i>See pages 15-16.</i>
	<i>MP3 or WMA files are corrupted.</i>	<i>Download uncorrupted files.</i>
<i>Download failure.</i>	<i>Damaged USB cable.</i>	<i>Replace cable.</i>
<i>The computer is not recognizing the unit.</i>	<i>The USB cable is not securely connected.</i>	<i>Securely connect USB cable.</i>
	<i>Driver not installed or computer not compatible.</i>	<i>Install driver and/or see pages 8-14 for compatibility.</i>

SPECIFICATIONS

PC System Requirements

- Pentium Class 300MHz processor or better
- Windows® 98/Me/2000/XP
- 96 MB RAM (32 MB for Win98)
- 50 MB hard drive space
- Video display card
- Soundcard
- Microsoft Internet Explorer 5.0 or later
- CD-ROM drive
- USB host socket

Audio Specifications

- Audio S/N (signal-to-noise ratio): 60 dB
- Audio THD (total harmonic distortion): less than 0.1%
- Frequency response: 20Hz – 20kHz
- Headphone Output: 12 mW, 16 Ohms

File Support

- MP3
- WMA: Windows Media Audio (WMA file with DRM)
- Bit Rate: 8kbps-320kbps
- Tag Info: ID3 Tag
- General Dimensions: 97 x 63 x 21 mm
- Weight: 92 g
- Battery: Lithium Polymer Battery
- LCD: Full Graphic with Backlight
- Language: English
- USB: USB 2.0
- Built-in Memory: 1.5 GB
- Max. Playtime: Approx. 8 hours (Battery fully charged)

Specifications are subject to change without notice.

**FOR FIRMWARE UPGRADE, PLEASE VISIT OUR WEBSITE AT
WWW.MEMOREXELECTRONICS.COM
TO CHECK IF THERE IS NEW FIRMWARE AVAILABLE.**

**FOR ADDITIONAL SET-UP OR OPERATING ASSISTANCE,
PLEASE VISIT OUR WEBSITE AT
WWW.MEMOREXELECTRONICS.COM
OR CONTACT CUSTOMER SERVICE AT (954) 660-7100.**

**PLEASE KEEP ALL PACKAGING MATERIAL FOR AT LEAST 90
DAYS IN CASE YOU NEED TO RETURN THIS PRODUCT TO YOUR
PLACE OF PURCHASE OR TO MEMOREX.**

**FOR PARTS AND ACCESSORIES, CONTACT FOX INTERNATIONAL
AT 1-800-321-6993.**

Memcorp, Inc.
Weston, FL
Printed in China

Visit our website at www.memorexelectronics.com